



**U.S. ARMY CORPS OF ENGINEERS
REGULATORY PROGRAM
APPROVED JURISDICTIONAL DETERMINATION FORM (INTERIM)
NAVIGABLE WATERS PROTECTION RULE**

I. ADMINISTRATIVE INFORMATION

Completion Date of Approved Jurisdictional Determination (AJD): [February 10, 2021](#).
 ORM Number: [SWF-2020-00550](#)
 Associated JDs: [N/A](#)
 Review Area Location¹: State/Territory: [Texas](#) City: [Aledo](#) County/Parish/Borough: [Parker](#)
 Center Coordinates of Review Area: Latitude [32.747895](#) Longitude [-97.581597](#)

II. FINDINGS

A. Summary: Check all that apply. At least one box from the following list **MUST** be selected. Complete the corresponding sections/tables and summarize data sources.

- The review area is comprised entirely of dry land (i.e., there are no waters or water features, including wetlands, of any kind in the entire review area). Rationale: [There are no water features in the evaluation area/parcel that meet the definition of waters of the US.](#)
- There are “navigable waters of the United States” within Rivers and Harbors Act jurisdiction within the review area (complete table in Section II.B).
- There are “waters of the United States” within Clean Water Act jurisdiction within the review area (complete appropriate tables in Section II.C).
- There are waters or water features excluded from Clean Water Act jurisdiction within the review area (complete table in Section II.D).

B. Rivers and Harbors Act of 1899 Section 10 (§ 10)²

t§ 10 Name	§ 10 Size		§ 10 Criteria	Rationale for § 10 Determination
N/A.	N/A.	N/A	N/A.	N/A.

C. Clean Water Act Section 404

Territorial Seas and Traditional Navigable Waters ((a)(1) waters): ³				
(a)(1) Name	(a)(1) Size		(a)(1) Criteria	Rationale for (a)(1) Determination
N/A.	N/A.	N/A.	N/A.	N/A.

Tributaries ((a)(2) waters):				
(a)(2) Name	(a)(2) Size		(a)(2) Criteria	Rationale for (a)(2) Determination
Little Marys Creek	4,614	linear feet	(a)(2) Perennial tributary contributes surface water flow directly or indirectly to an (a)(1) water in a typical year.	Self-evident that it's perennial due to continual effluent discharge upslope.
Tributary 1	2,025	linear feet	(a)(2) Intermittent tributary contributes surface water flow directly or indirectly to	Self-evident intermittent stream indicated by the presence of numerous seasonal hydrology.

¹ Map(s)/figure(s) are attached to the AJD provided to the requestor.

² If the navigable water is not subject to the ebb and flow of the tide or included on the District's list of Rivers and Harbors Act Section 10 navigable waters list, do NOT use this document to make the determination. The District must continue to follow the procedure outlined in 33 CFR part 329.14 to make a Rivers and Harbors Act Section 10 navigability determination.

³ A stand-alone TNW determination is completed independently of a request for an AJD. A stand-alone TNW determination is conducted for a specific segment of river or stream or other type of waterbody, such as a lake, where upstream or downstream limits or lake borders are established. A stand-alone TNW determination should be completed following applicable guidance and should NOT be documented on the AJD Form.



**U.S. ARMY CORPS OF ENGINEERS
REGULATORY PROGRAM
APPROVED JURISDICTIONAL DETERMINATION FORM (INTERIM)
NAVIGABLE WATERS PROTECTION RULE**

Tributaries ((a)(2) waters):				
(a)(2) Name	(a)(2) Size		(a)(2) Criteria	Rationale for (a)(2) Determination
			an (a)(1) water in a typical year.	
Tributary 2	2,157	linear feet	(a)(2) Intermittent tributary contributes surface water flow directly or indirectly to an (a)(1) water in a typical year.	Self-evident intermittent stream indicated by the presence of numerous seasonal hydrology.

Lakes and ponds, and impoundments of jurisdictional waters ((a)(3) waters):				
(a)(3) Name	(a)(3) Size		(a)(3) Criteria	Rationale for (a)(3) Determination
N/A.	N/A.	N/A.	N/A.	N/A.

Adjacent wetlands ((a)(4) waters):				
(a)(4) Name	(a)(4) Size		(a)(4) Criteria	Rationale for (a)(4) Determination
Wetland 7	0.60	acre(s)	(a)(4) Wetland abuts an (a)(1)-(a)(3) water.	Wetland abutting Tributary 2 (intermittent).
Wetland 8	0.05	acre(s)	(a)(4) Wetland abuts an (a)(1)-(a)(3) water.	Wetland abutting Tributary 1 (intermittent).

D. Excluded Waters or Features

Excluded waters ((b)(1) – (b)(12)): ⁴				
Exclusion Name	Exclusion Size		Exclusion ⁵	Rationale for Exclusion Determination
EF 1	214	linear feet	(b)(3) Ephemeral feature, including an ephemeral stream, swale, gully, rill, or pool.	No indicators such as OBL/FACW vegetation, hydric soils, macro-invertebrates, algae accumulation in the channel observed. Also contrasted to perennial and intermittent streams onsite.
Wetland 1	0.03	acre(s)	(b)(1) Non-adjacent wetland.	Isolated wetland.
Wetland 2	0.04	acre(s)	(b)(1) Non-adjacent wetland.	Isolated wetland.
Wetland 3	0.09	acre(s)	(b)(1) Non-adjacent wetland.	Isolated wetland.
Wetland 4	0.07	acre(s)	(b)(1) Non-adjacent wetland.	Isolated wetland
Wetland 5	0.04	acre(s)	(b)(1) Non-adjacent wetland.	Isolated wetland
Wetland 6	0.02	acre(s)	(b)(1) Non-adjacent wetland.	Isolated wetland
Pond 1	0.03	acre(s)	(b)(8) Artificial lake/pond constructed or excavated in	Artificially created pond in an upland for watering livestock.

⁴ Some excluded waters, such as (b)(2) and (b)(4), may not be specifically identified on the AJD form unless a requestor specifically asks a Corps district to do so. Corps districts may, in case-by-case instances, choose to identify some or all of these waters within the review area.

⁵ Because of the broad nature of the (b)(1) exclusion and in an effort to collect data on specific types of waters that would be covered by the (b)(1) exclusion, four sub-categories of (b)(1) exclusions were administratively created for the purposes of the AJD Form. These four sub-categories are not new exclusions, but are simply administrative distinctions and remain (b)(1) exclusions as defined by the NWPR.



**U.S. ARMY CORPS OF ENGINEERS
REGULATORY PROGRAM
APPROVED JURISDICTIONAL DETERMINATION FORM (INTERIM)
NAVIGABLE WATERS PROTECTION RULE**

Excluded waters ((b)(1) – (b)(12)): ⁴			
Exclusion Name	Exclusion Size	Exclusion ⁵	Rationale for Exclusion Determination
		upland or a non-jurisdictional water, so long as the artificial lake or pond is not an impoundment of a jurisdictional water that meets (c)(6).	

III. SUPPORTING INFORMATION

A. Select/enter all resources that were used to aid in this determination and attach data/maps to this document and/or references/citations in the administrative record, as appropriate.

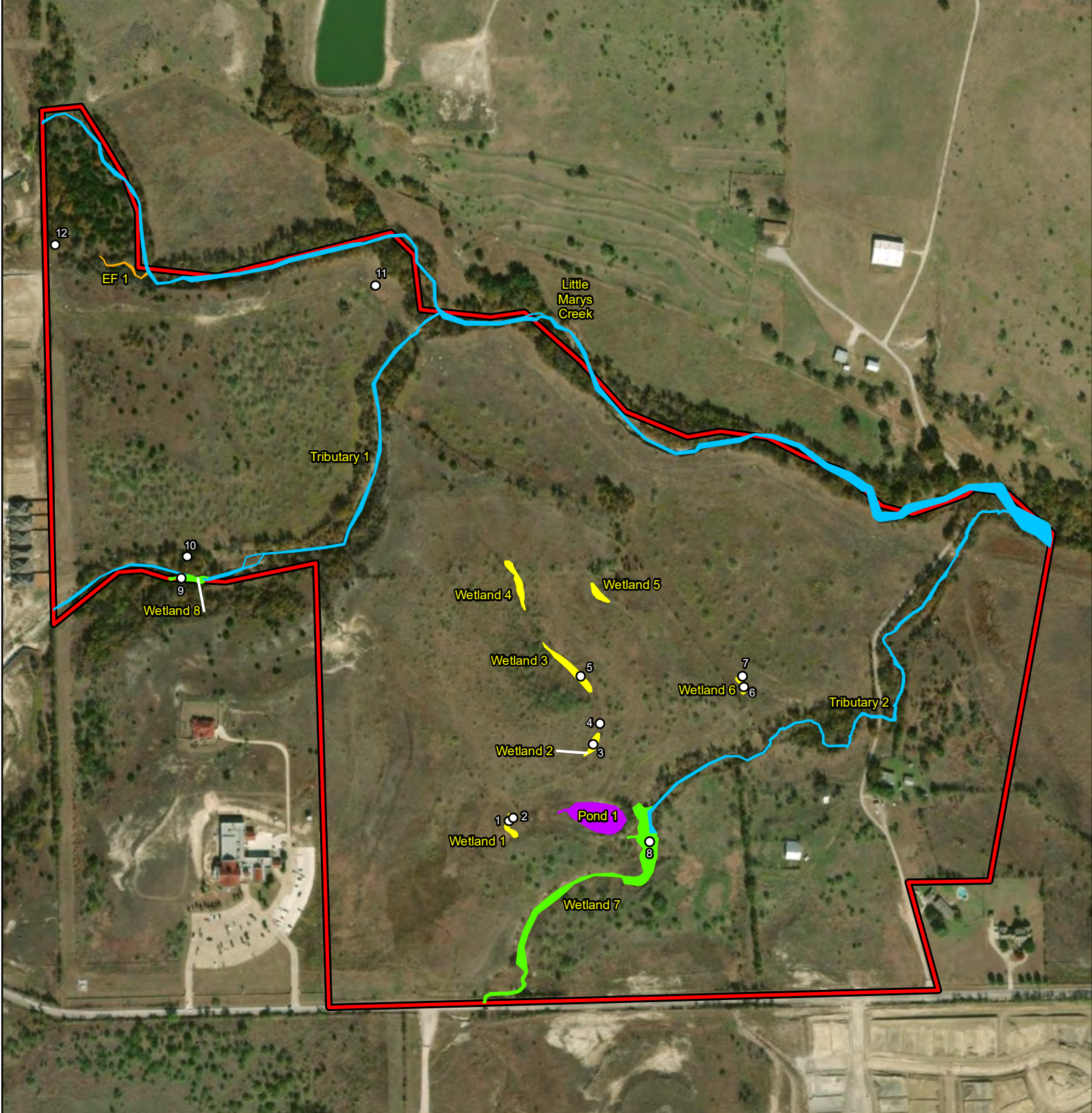
- Information submitted by, or on behalf of, the applicant/consultant: [See the file.](#)
This information **is** sufficient for purposes of this AJD.
Rationale: [N/A or describe rationale for insufficiency \(including partial insufficiency\).](#)
- Data sheets prepared by the Corps: [Title\(s\) and/or date\(s\).](#)
- Photographs: [Select. Title\(s\) and/or date\(s\).](#)
- Corps site visit(s) conducted on: [Date\(s\).](#)
- Previous Jurisdictional Determinations (AJDs or PJDs): [ORM Number\(s\) and date\(s\).](#)
- Antecedent Precipitation Tool: [provide detailed discussion in Section III.B.](#)
- USDA NRCS Soil Survey: [Title\(s\) and/or date\(s\).](#)
- USFWS NWI maps: [Title\(s\) and/or date\(s\).](#)
- USGS topographic maps: [Title\(s\) and/or date\(s\).](#)

Other data sources used to aid in this determination:

Data Source (select)	Name and/or date and other relevant information
USGS Sources	N/A.
USDA Sources	N/A.
NOAA Sources	N/A.
USACE Sources	N/A.
State/Local/Tribal Sources	N/A.
Other Sources	N/A.

B. Typical year assessment(s): [N/A or provide typical year assessment for each relevant data source used to support the conclusions in the AJD.](#)

C. Additional comments to support AJD: [N/A or provide additional discussion as appropriate.](#)



**Figure 5.
Aquatic Features Identified
within the Survey Area**

Aledo ISD MS #2
City of Aledo
Parker County, Texas



File Ref. 04.080.086
Date: 12/15/2020

- Survey Area
- Wetland Determination Data Form
- Aquatic Features That Meet a Definition of a Water of the United States**
- Tributary (a)(2)
- Adjacent Wetland (a)(4)
- Excluded Aquatic Features**
- Wetland (b)(1)
- Ephemeral Feature (b)(3)
- Artificial Pond (b)(8)